

# \$244,900 - 402 Queen Street, Chauvin

MLS® #A2210992

## \$244,900

5 Bedroom, 3.00 Bathroom, 14,854 sqft

Residential on 0.25 Acres

Chauvin, Chauvin, Alberta

Nestled in the town of Chauvin, a hidden gem awaits those seeking the perfect blend of comfort, space, and tranquility. This 3-bedroom home, situated on an expansive lot, offers a remarkable opportunity to experience the joys of country living without compromising on modern conveniences. With its spacious fenced yard and versatile workshop that could easily be transformed into a garage, this property is a dream come true for families.

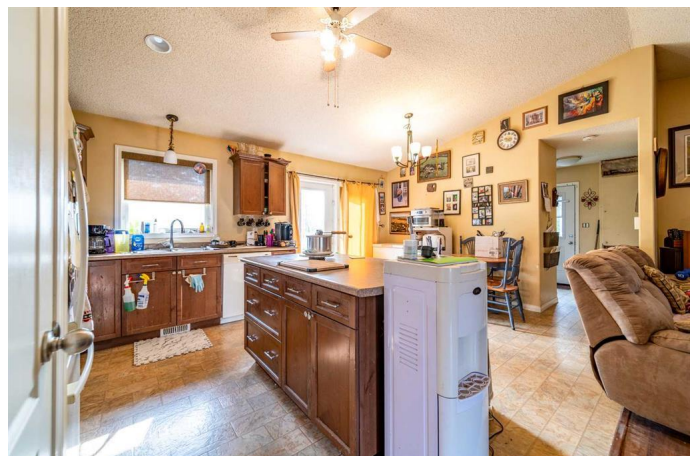
Built in 2011

## Essential Information

MLS® #	A2210992
Price	\$244,900
Bedrooms	5
Bathrooms	3.00
Full Baths	1
Half Baths	2
Square Footage	14,854
Acres	0.25
Year Built	2011
Type	Residential
Sub-Type	Detached
Style	Bungalow
Status	Active

## Community Information

Address 402 Queen Street



Subdivision	Chauvin
City	Chauvin
County	Wainwright No. 61, M.D. of
Province	Alberta
Postal Code	T0B 0V0

### Amenities

Parking Spaces	4
Parking	Double Garage Detached
# of Garages	2

### Interior

Interior Features	Ceiling Fan(s), Laminate Counters
Appliances	Dryer, Electric Stove, Refrigerator, Washer
Heating	Forced Air, Natural Gas
Cooling	None
Has Basement	Yes
Basement	Full, Partially Finished

### Exterior

Exterior Features	Private Yard
Lot Description	Back Yard, Landscaped, Lawn
Roof	Asphalt Shingle
Construction	Vinyl Siding, Wood Frame
Foundation	Wood

### Additional Information

Date Listed	April 11th, 2025
Days on Market	8
Zoning	Residential

### Listing Details

Listing Office	CENTURY 21 CONNECT REALTY
----------------	---------------------------

Data is supplied by Pillar 9â„¢ MLS® System. Pillar 9â„¢ is the owner of the copyright in its MLS® System. Data is deemed reliable but is not guaranteed accurate by Pillar 9â„¢. The trademarks MLS®, Multiple Listing Service® and the associated logos are owned by The Canadian Real Estate Association (CREA) and identify the quality of services provided by real estate professionals who are members of CREA. Used under license.