

# \$310,000 - 316, 2727 28 Avenue Se, Calgary

MLS® #A2210913

## \$310,000

2 Bedroom, 1.00 Bathroom, 844 sqft

Residential on 0.00 Acres

Dover, Calgary, Alberta

Welcome to this stylish 2-bedroom condo offering stunning mountain views and a peaceful courtyard-facing setting. Enjoy a modern kitchen with stainless steel appliances, spacious living areas, and large windows that fill the space with natural light. This unit includes titled underground parking, extra storage, and a well-managed building in a desirable location. The perfect blend of comfort, convenience, and scenic charm!

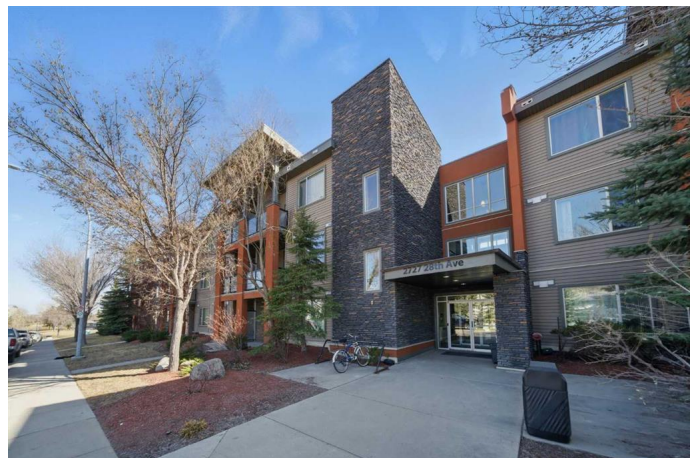
Built in 2009

## Essential Information

MLS® #	A2210913
Price	\$310,000
Bedrooms	2
Bathrooms	1.00
Full Baths	1
Square Footage	844
Acres	0.00
Year Built	2009
Type	Residential
Sub-Type	Apartment
Style	Single Level Unit
Status	Active

## Community Information

Address	316, 2727 28 Avenue Se
Subdivision	Dover



City	Calgary
County	Calgary
Province	Alberta
Postal Code	T2B 0L4

### **Amenities**

Amenities	Elevator(s), Playground, Storage
Parking Spaces	1
Parking	Underground

### **Interior**

Interior Features	Closet Organizers, High Ceilings, Laminate Counters, Vinyl Windows
Appliances	Dishwasher, Dryer, Electric Stove, Microwave Hood Fan, Refrigerator, Washer, Window Coverings
Heating	Baseboard
Cooling	None
# of Stories	3

### **Exterior**

Exterior Features	Balcony, Courtyard
Construction	Brick, Vinyl Siding

### **Additional Information**

Date Listed	April 12th, 2025
Days on Market	7
Zoning	DC

### **Listing Details**

Listing Office	CIR Realty
----------------	------------

Data is supplied by Pillar 9â„¢ MLSÂ® System. Pillar 9â„¢ is the owner of the copyright in its MLSÂ® System. Data is deemed reliable but is not guaranteed accurate by Pillar 9â„¢. The trademarks MLSÂ®, Multiple Listing ServiceÂ® and the associated logos are owned by The Canadian Real Estate Association (CREA) and identify the quality of services provided by real estate professionals who are members of CREA. Used under license.