

\$889,900 - 102, 211 Quarry Way Se, Calgary

MLS® #A2210135

\$889,900

2 Bedroom, 2.00 Bathroom, 1,415 sqft

Residential on 0.00 Acres

Douglasdale/Glen, Calgary, Alberta

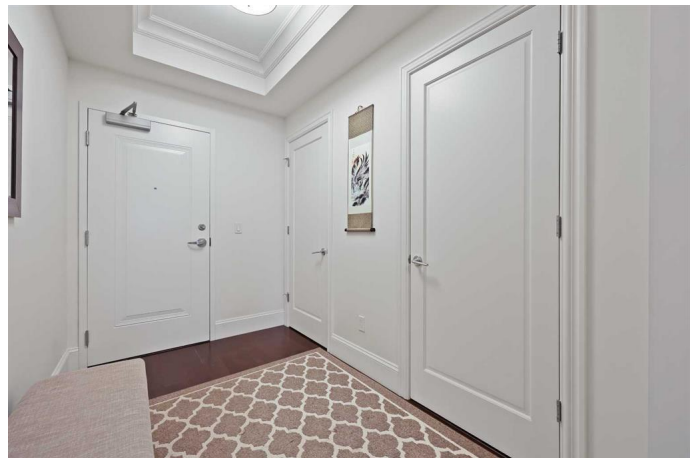
Welcome to Champagne—a premier address in the heart of Quarry Park, where elegance meets riverside serenity. This stunning ground floor corner unit offers over 1,400 square feet of beautifully designed living space, perfectly positioned to take full advantage of its southwest exposure and lush green surroundings.

Step out onto your large, covered patio—an ideal spot for morning coffee or sunset wine—as it backs onto a peaceful greenspace with direct access to the Bow River and pathway system. Whether you love biking, jogging, or quiet evening strolls, nature is literally at your doorstep.

Inside, you'll find a bright and spacious 2-bedroom, 2-bathroom well-appointed layout. The generously sized primary bedroom is a true standout. The ensuite features double sinks, granite countertops, a soaker tub, and a separate shower.

The heart of the home is the expansive kitchen—perfect for cooking and entertaining. With granite countertops, stainless steel appliances, a gas range, it's as functional as it is beautiful. The 9-foot ceilings and hardwood flooring throughout enhance the open, airy feel, while large windows fill the space with warm, natural light. A custom built-in desk adds further functionality to this lovely space.

This home also includes 2 titled underground parking stalls and a massive titled storage locker as well as two carwashes and secure



bike storage. Additionally, the building's concrete construction ensures that your home remains remarkably quiet and private. Bright, beautiful, and meticulously maintained—this is luxury living in one of Calgary's most desirable condominiums. Welcome home.

Built in 2015

Essential Information

| | |
|----------------|-------------------|
| MLS® # | A2210135 |
| Price | \$889,900 |
| Bedrooms | 2 |
| Bathrooms | 2.00 |
| Full Baths | 2 |
| Square Footage | 1,415 |
| Acres | 0.00 |
| Year Built | 2015 |
| Type | Residential |
| Sub-Type | Apartment |
| Style | Single Level Unit |
| Status | Active |

Community Information

| | |
|-------------|------------------------|
| Address | 102, 211 Quarry Way Se |
| Subdivision | Douglasdale/Glen |
| City | Calgary |
| County | Calgary |
| Province | Alberta |
| Postal Code | T2C 5M6 |

Amenities

| | |
|----------------|--|
| Amenities | Car Wash, Secured Parking, Storage, Trash, Visitor Parking |
| Parking Spaces | 2 |
| Parking | Parkade, Titled, Underground |
| # of Garages | 2 |

Interior

| | |
|-------------------|---|
| Interior Features | Built-in Features, Granite Counters, Open Floorplan, Separate Entrance, Walk-In Closet(s) |
| Appliances | Dishwasher, Electric Oven, Gas Cooktop, Microwave, Refrigerator, Washer, Washer/Dryer |
| Heating | Forced Air |
| Cooling | Central Air |
| Fireplace | Yes |
| # of Fireplaces | 1 |
| Fireplaces | Electric, Living Room |
| # of Stories | 5 |

Exterior

| | |
|-------------------|--------------|
| Exterior Features | BBQ gas line |
| Construction | Concrete |

Additional Information

| | |
|----------------|------------------|
| Date Listed | April 10th, 2025 |
| Days on Market | 8 |
| Zoning | DC |
| HOA Fees | 26 |
| HOA Fees Freq. | MON |

Listing Details

| | |
|----------------|-----------------------------|
| Listing Office | RE/MAX Realty Professionals |
|----------------|-----------------------------|

Data is supplied by Pillar 9â„¢ MLSÂ® System. Pillar 9â„¢ is the owner of the copyright in its MLSÂ® System. Data is deemed reliable but is not guaranteed accurate by Pillar 9â„¢. The trademarks MLSÂ®, Multiple Listing ServiceÂ® and the associated logos are owned by The Canadian Real Estate Association (CREA) and identify the quality of services provided by real estate professionals who are members of CREA. Used under license.