

\$275,000 - 628 Prairie Meadows Close W, Brooks

MLS® #A2209227

\$275,000

3 Bedroom, 2.00 Bathroom, 1,554 sqft
Residential on 0.07 Acres

West End, Brooks, Alberta

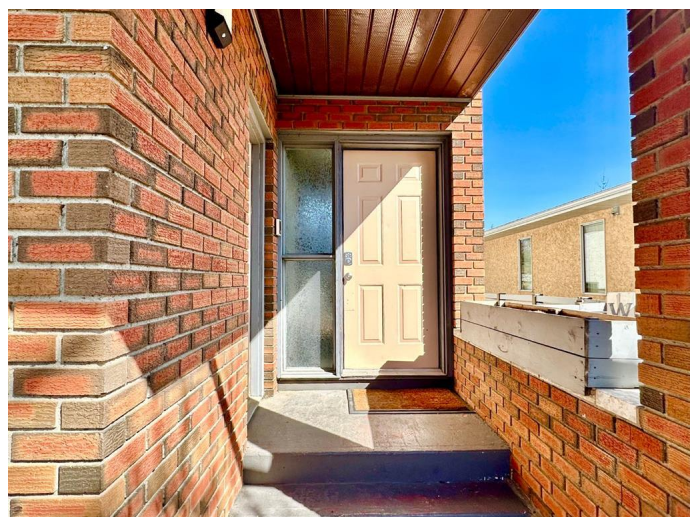
Modern 4-Level End Unit Townhome in Highly
Desirable Prairie Meadows

Welcome to this beautifully updated townhome nestled in the sought after Prairie Meadows neighbourhood. With thoughtful renovations and stylish updates throughout, this 3 bedroom, 2 bathroom home offers comfort, functionality, and a modern aesthetic.

Step inside to find light, airy paint tones complemented by upgraded light fixtures and durable vinyl plank flooring. The upper level features a welcoming kitchen with painted grey cabinetry, butcher block countertops, and an open feel perfect for cooking and entertaining. The living room is cozy and inviting with a wood burning fireplace and patio doors that open to a relaxing balcony overlooking the front street.

A few steps down you'll find a spacious primary bedroom complete with a walk-in closet and direct access to a 4pc bathroom. A 2nd bedroom on this floor is ideal for family, guests or office.

On the lower level, enjoy a fully renovated 3pc bathroom, 3rd bedroom, laundry and a generous family room with patio doors leading to a fenced backyard. The outdoor space is perfect for relaxing or hosting with a large deck/patio area enclosed for privacy and safety.



Additional highlights include a long lasting metal roof, central air conditioning, sleek new black metal interior railings, and a newer washer and dryer (included). The single attached garage and large block driveway provide ample parking for residents and visitors alike.

Meticulously maintained and move in ready, this home blends modern style with everyday functionality, just steps from a private playground nestled behind the lovely homes in Prairie Meadows. This beauty won't last long, take a look today!

Built in 1979

Essential Information

MLS® #	A2209227
Price	\$275,000
Bedrooms	3
Bathrooms	2.00
Full Baths	2
Square Footage	1,554
Acres	0.07
Year Built	1979
Type	Residential
Sub-Type	Row/Townhouse
Style	4 Level Split
Status	Active

Community Information

Address	628 Prairie Meadows Close W
Subdivision	West End
City	Brooks
County	Brooks
Province	Alberta
Postal Code	T1R 0C9

Amenities

Parking Spaces	3
Parking	Additional Parking, Single Garage Attached, Block Driveway
# of Garages	1

Interior

Interior Features	Built-in Features, Ceiling Fan(s), Closet Organizers, See Remarks
Appliances	Central Air Conditioner, Dishwasher, Dryer, Gas Stove, Refrigerator, Washer
Heating	Forced Air, Natural Gas
Cooling	Central Air
Fireplace	Yes
# of Fireplaces	1
Fireplaces	Living Room, Wood Burning
Has Basement	Yes
Basement	Finished, Full

Exterior

Exterior Features	Balcony
Lot Description	Back Yard
Roof	Metal
Construction	Brick, Mixed, Wood Siding
Foundation	Poured Concrete

Additional Information

Date Listed	April 7th, 2025
Days on Market	9
Zoning	R-HD

Listing Details

Listing Office	Royal LePage Community Realty
----------------	-------------------------------

Data is supplied by Pillar 9â„¢ MLSÂ® System. Pillar 9â„¢ is the owner of the copyright in its MLSÂ® System. Data is deemed reliable but is not guaranteed accurate by Pillar 9â„¢. The trademarks MLSÂ®, Multiple Listing ServiceÂ® and the associated logos are owned by The Canadian Real Estate Association (CREA) and identify the quality of services provided by real estate professionals who are members of CREA. Used under license.