

\$659,900 - 137 Amery Crescent, Crossfield

MLS® #A2207738

\$659,900

3 Bedroom, 3.00 Bathroom, 1,941 sqft

Residential on 0.12 Acres

NONE, Crossfield, Alberta

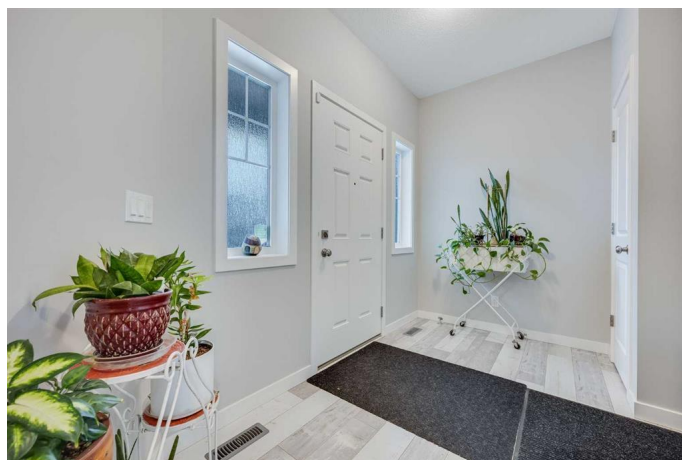
Welcome to this beautifully designed 2-story detached home, perfectly situated in a peaceful neighbourhood with a backyard that opens directly onto a beautiful park. Offering the ideal blend of comfort and convenience, this home features a spacious open-concept layout, large windows that bring in plenty of natural light, and views of the green space behind. With 3 bedrooms and 2.5 bathrooms, this home is perfect for families looking for extra space. The modern kitchen boasts features like quartz countertops, stainless steel appliances, and a large island, while the cozy living area with a fireplace creates the perfect place to unwind. Upstairs, you'll find generously sized bedrooms, including a primary suite with a walk-in closet and ensuite. Step outside to your private backyard oasis, where you can enjoy morning coffee while taking in the park views. With access to walking trails, playgrounds, and green space, this location is perfect for outdoor enthusiasts and families alike. Located just minutes from schools, shops, and essential amenities, this home offers small-town charm with easy access to Airdrie and Calgary. Don't miss out on this rare opportunity—schedule your private showing today!

Built in 2020

Essential Information

MLS® #

A2207738



| | |
|----------------|-------------|
| Price | \$659,900 |
| Bedrooms | 3 |
| Bathrooms | 3.00 |
| Full Baths | 2 |
| Half Baths | 1 |
| Square Footage | 1,941 |
| Acres | 0.12 |
| Year Built | 2020 |
| Type | Residential |
| Sub-Type | Detached |
| Style | 2 Storey |
| Status | Active |

Community Information

| | |
|-------------|--------------------|
| Address | 137 Amery Crescent |
| Subdivision | NONE |
| City | Crossfield |
| County | Rocky View County |
| Province | Alberta |
| Postal Code | T0M 0S0 |

Amenities

| | |
|----------------|------------------------|
| Parking Spaces | 4 |
| Parking | Double Garage Attached |
| # of Garages | 2 |

Interior

| | |
|-------------------|--|
| Interior Features | High Ceilings, Kitchen Island, No Animal Home, No Smoking Home, Quartz Counters |
| Appliances | Dishwasher, Dryer, Garage Control(s), Microwave, Range Hood, Refrigerator, Washer, Gas Stove |
| Heating | Forced Air, Natural Gas, High Efficiency |
| Cooling | None |
| Fireplace | Yes |
| # of Fireplaces | 1 |
| Fireplaces | Electric |
| Has Basement | Yes |
| Basement | Full, Unfinished |

Exterior

| | |
|-------------------|------------------------------|
| Exterior Features | Other |
| Lot Description | Backs on to Park/Green Space |
| Roof | Asphalt Shingle |
| Construction | Vinyl Siding |
| Foundation | Poured Concrete |

Additional Information

| | |
|----------------|-----------------|
| Date Listed | April 1st, 2025 |
| Days on Market | 16 |
| Zoning | R-1B |

Listing Details

| | |
|----------------|------------------------------------|
| Listing Office | RE/MAX Real Estate (Mountain View) |
|----------------|------------------------------------|

Data is supplied by Pillar 9â„¢ MLSÂ® System. Pillar 9â„¢ is the owner of the copyright in its MLSÂ® System. Data is deemed reliable but is not guaranteed accurate by Pillar 9â„¢. The trademarks MLSÂ®, Multiple Listing ServiceÂ® and the associated logos are owned by The Canadian Real Estate Association (CREA) and identify the quality of services provided by real estate professionals who are members of CREA. Used under license.