

\$899,000 - 652 11 Street S, Lethbridge

MLS® #A2207540

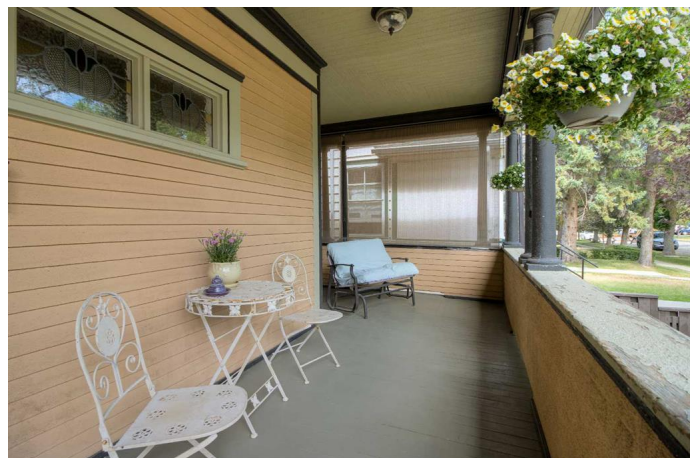
\$899,000

6 Bedroom, 5.00 Bathroom, 2,630 sqft

Residential on 0.19 Acres

London Road, Lethbridge, Alberta

Presenting a unique chance to own your dream home in a historic, well established family-friendly neighborhood adorned with mature trees and a central location: London Road! This highly sought-after area is nestled in the heart of Lethbridge, within walking distance to the hospital, schools, boutiques, shops, restaurants, dog-walking paths, bike trails, and Henderson Park and pool. You'll appreciate the ease of navigation along 7th Avenue, connecting Mayor Magrath Drive and Scenic! This Victorian-style family residence radiates character and charm and is situated on a spacious corner lot, featuring a legal suite above the garage. With an open-concept design and vaulted ceilings, the suite presents a wonderful opportunity to accommodate family members (keeping the in-laws close but not "too" close!) or to generate additional income through tenants or Airbnb. The two and a half story home comprises five generous bedrooms, perfect for a growing family in need of space. The main floor greets you with original hardwood floors that flow into a spacious living room, seamlessly connected to a formal dining area. The expansive kitchen is a chef's dream, boasting a built-in wall oven and microwave, stainless steel appliances, and a gas cooktop. Moreover, the main floor includes a versatile flex space featuring an original fireplace, ideal for a home office. On the second floor, you'll find the grand primary bedroom, a second bedroom, a convenient laundry room, and a beautifully updated



bathroom complete with a claw-foot tub and a new shower. The top floor hosts two additional bedrooms and another bathroom with a shower. The finished basement adds even more living space, including a family room, bathroom, and bedroom. The outdoor area is equally impressive, featuring an above-garage suite, a pergola-covered patio with a BBQ area, and a generous garden space, making it the perfect setting for family gatherings! Enjoy peace of mind while entertaining, as the barn-style playhouse and sandbox are within sight of the pergola. The garage electrical panel has been thoughtfully upgraded to 220A, allowing for solar panel installation on the ideally south-facing roof (2022). Additionally, the home has been extensively renovated, with updates to plumbing, electrical, and HVAC systems approximately 15 years ago to meet modern building codes. This exceptional property has been lovingly maintained by its current owners, and it is now ready for the next family to create lasting memories. Don't miss out on this one, Contact your favourite REALTOR® to book a viewing today!

Built in 1910

Essential Information

| | |
|----------------|-------------------|
| MLS® # | A2207540 |
| Price | \$899,000 |
| Bedrooms | 6 |
| Bathrooms | 5.00 |
| Full Baths | 3 |
| Half Baths | 2 |
| Square Footage | 2,630 |
| Acres | 0.19 |
| Year Built | 1910 |
| Type | Residential |
| Sub-Type | Detached |
| Style | 2 and Half Storey |

| | |
|--------|--------|
| Status | Active |
|--------|--------|

Community Information

| | |
|-------------|-----------------|
| Address | 652 11 Street S |
| Subdivision | London Road |
| City | Lethbridge |
| County | Lethbridge |
| Province | Alberta |
| Postal Code | T1J 2P2 |

Amenities

| | |
|----------------|------------------------------------|
| Parking Spaces | 2 |
| Parking | Double Garage Detached, Off Street |
| # of Garages | 2 |

Interior

| | |
|-------------------|-----------------------------|
| Interior Features | Storage, Vaulted Ceiling(s) |
| Appliances | See Remarks |
| Heating | Forced Air |
| Cooling | Central Air |
| Fireplace | Yes |
| # of Fireplaces | 1 |
| Fireplaces | Gas |
| Has Basement | Yes |
| Basement | Finished, Full |

Exterior

| | |
|-------------------|---|
| Exterior Features | Other |
| Lot Description | Back Lane, Back Yard, Corner Lot, Garden, Lawn, Standard Shaped Lot |
| Roof | Asphalt Shingle |
| Construction | Mixed, Wood Frame |
| Foundation | Poured Concrete |

Additional Information

| | |
|----------------|-----------------|
| Date Listed | April 8th, 2025 |
| Days on Market | 10 |
| Zoning | R-L(L) |

Listing Details

Listing Office

RE/MAX REAL ESTATE - LETHBRIDGE

Data is supplied by Pillar 9â„¢ MLSÂ® System. Pillar 9â„¢ is the owner of the copyright in its MLSÂ® System. Data is deemed reliable but is not guaranteed accurate by Pillar 9â„¢. The trademarks MLSÂ®, Multiple Listing ServiceÂ® and the associated logos are owned by The Canadian Real Estate Association (CREA) and identify the quality of services provided by real estate professionals who are members of CREA. Used under license.