

# \$39,900 - 39, 1190 15 Avenue, Didsbury

MLS® #A2206320

**\$39,900**

2 Bedroom, 1.00 Bathroom, 788 sqft

Mobile on 0.00 Acres

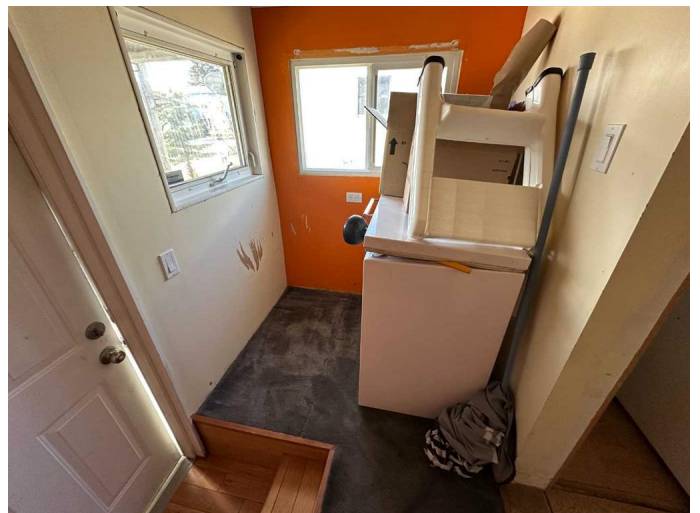
NONE, Didsbury, Alberta

Here is a great opportunity for you to get into the real estate market at an affordable price. This 2 bedroom, 1 bathroom double wide would be a great home for your small family. The main living area has hardwood flooring, several windows and as well the kitchen were updated a few years back. There is a nice wood wall unit in the dining room which will help with necessary storage. The laundry is in the back porch addition, along with a newer hot water heater. There are 2 storage sheds for the yard tools and possibly the smaller one could become a playhouse for your children. Take a good look and see if this would work for you. Buyer's will need to receive park approval.

Built in 1970

## Essential Information

MLS® #	A2206320
Price	\$39,900
Bedrooms	2
Bathrooms	1.00
Full Baths	1
Square Footage	788
Acres	0.00
Year Built	1970
Type	Mobile
Sub-Type	Mobile
Style	Double Wide Mobile Home



Status Active

### Community Information

Address 39, 1190 15 Avenue  
Subdivision NONE  
City Didsbury  
County Mountain View County  
Province Alberta  
Postal Code T0M 0W0

### Amenities

Parking Spaces 2  
Parking Off Street, Parking Pad

### Interior

Appliances Dishwasher, Dryer, Electric Stove, Refrigerator, See Remarks, Wall/Window Air Conditioner, Washer  
Heating Forced Air

### Exterior

Roof Metal

### Additional Information

Date Listed March 31st, 2025  
Days on Market 18

### Listing Details

Listing Office Front Porch Realty

Data is supplied by Pillar 9â„¢ MLSÂ® System. Pillar 9â„¢ is the owner of the copyright in its MLSÂ® System. Data is deemed reliable but is not guaranteed accurate by Pillar 9â„¢. The trademarks MLSÂ®, Multiple Listing ServiceÂ® and the associated logos are owned by The Canadian Real Estate Association (CREA) and identify the quality of services provided by real estate professionals who are members of CREA. Used under license.