

\$289,000 - 108 Cree Road, Fort McMurray

MLS® #A2205368

\$289,000

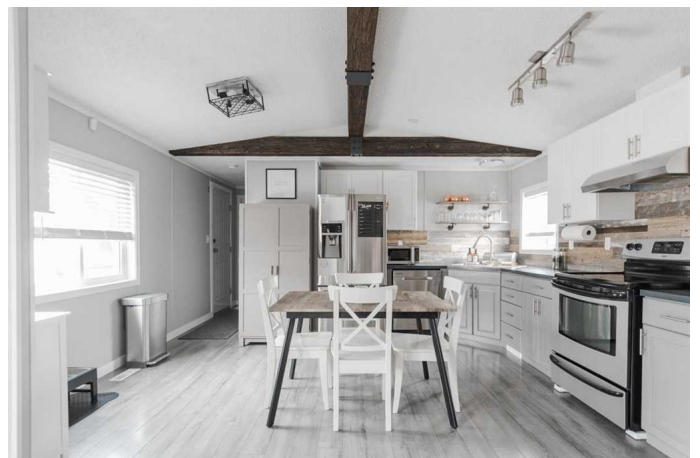
3 Bedroom, 2.00 Bathroom, 982 sqft
Residential on 0.10 Acres

Timberlea, Fort McMurray, Alberta

Welcome to 108 Cree Road, a superior and fully renovated home built in 1997 that radiates style and cleanliness in the heart of Timberlea. This 3-bedroom, 2-bathroom beauty sits on a spacious 4,202 sq ft lot and boasts a white-and-bright interior, accented by gorgeous wood details throughout.

Meticulously maintained and in excellent condition, this home offers a fresh, airy vibe that's perfect for modern living—plus, enjoy the freedom of no condo fees!!! Inside, you'll find a seamless blend of elegant décor and thoughtful upgrades: new flooring, baseboards, and paint from 2018, updated bathroom vanities (2018), and appliances refreshed in 2016. The spacious master bedroom features a private ensuite, offering a retreat within this pristine home. A new hot water tank, shingles, and deck (2022) add durability, while a 2024 furnace ensures year-round comfort. Every space sparkles, from the open living areas to the stylish wood-and-white finishes that make this home stand out.

Step outside to a spacious deck—ideal for family gatherings—complete with an awning to provide privacy and shade during summer. With lots of parking and enough room for camper/RV, this property is as practical as it is inviting. You'll also enjoy a 12x16 heated oversized shed, perfect for small gatherings, storage, a workshop, or tinkering. Nestled in Timberlea near Tower Road—a haven for outdoor enthusiasts—you're just steps



from parks and trails, making this an adventurer's dream and a paradise for families with active kids!

Move-in ready and brimming with charm, 108 Cree is a rare find for an unbeatable price. Schedule your tour today and experience this pristine retreat for yourself!

Built in 1997

Essential Information

MLS® #	A2205368
Price	\$289,000
Bedrooms	3
Bathrooms	2.00
Full Baths	2
Square Footage	982
Acres	0.10
Year Built	1997
Type	Residential
Sub-Type	Detached
Style	Single Wide Mobile Home
Status	Active

Community Information

Address	108 Cree Road
Subdivision	Timberlea
City	Fort McMurray
County	Wood Buffalo
Province	Alberta
Postal Code	T9K 1X3

Amenities

Parking Spaces	3
Parking	Driveway, Off Street, Parking Pad

Interior

Interior Features	High Ceilings, See Remarks, Separate Entrance, Storage, Vaulted
-------------------	---

	Ceiling(s)
Appliances	Dishwasher, Range, Refrigerator, Washer/Dryer
Heating	Floor Furnace
Cooling	None
Basement	None

Exterior

Exterior Features	Awning(s), Fire Pit
Lot Description	Back Yard, Front Yard, Street Lighting
Roof	Shingle
Construction	Mixed, Wood Frame
Foundation	Pillar/Post/Pier

Additional Information

Date Listed	March 28th, 2025
Days on Market	26
Zoning	RMH

Listing Details

Listing Office	COLDWELL BANKER UNITED
----------------	------------------------

Data is supplied by Pillar 9â„¢ MLSÂ® System. Pillar 9â„¢ is the owner of the copyright in its MLSÂ® System. Data is deemed reliable but is not guaranteed accurate by Pillar 9â„¢. The trademarks MLSÂ®, Multiple Listing ServiceÂ® and the associated logos are owned by The Canadian Real Estate Association (CREA) and identify the quality of services provided by real estate professionals who are members of CREA. Used under license.