

# \$359,900 - 25, 298 Somerset Way Se, Medicine Hat

MLS® #A2203845

**\$359,900**

3 Bedroom, 3.00 Bathroom, 1,964 sqft  
Residential on 0.00 Acres

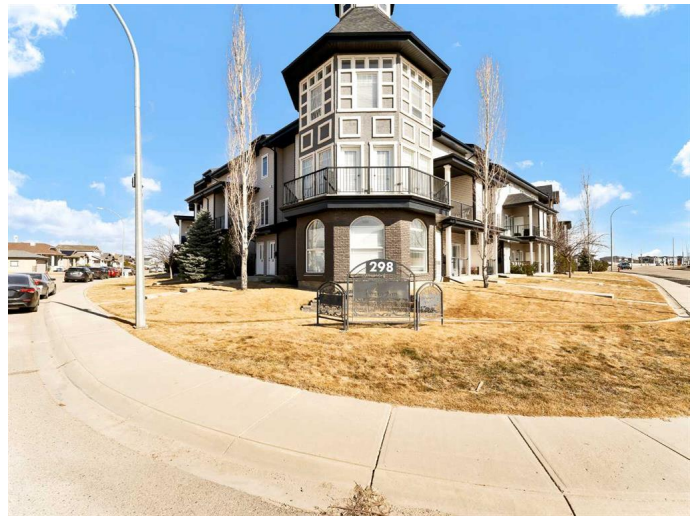
Southland, Medicine Hat, Alberta

This spacious 1,964 sq. ft. condo in the desirable Southland neighborhood offers a well-designed layout perfect for comfortable living. The main level features an open-concept kitchen, living, and dining area that flows effortlessly, plus a fantastic deck for outdoor enjoyment. You'll also find a convenient 2-piece bathroom and a cozy bedroom. Upstairs, the expansive primary bedroom includes a 4-piece ensuite and a walk-in closet, providing plenty of space for relaxation and storage. This level also offers a 4-piece main bathroom, an additional bedroom, and a versatile den or storage room. With low-maintenance living, this condo is a fantastic opportunity you won't want to miss!

Built in 2007

## Essential Information

MLS® #	A2203845
Price	\$359,900
Bedrooms	3
Bathrooms	3.00
Full Baths	2
Half Baths	1
Square Footage	1,964
Acres	0.00
Year Built	2007
Type	Residential
Sub-Type	Row/Townhouse



Style	2 Storey
Status	Active

### Community Information

Address	25, 298 Somerset Way Se
Subdivision	Southland
City	Medicine Hat
County	Medicine Hat
Province	Alberta
Postal Code	T1B0E9

### Amenities

Amenities	Fitness Center
Parking Spaces	1
Parking	Stall

### Interior

Interior Features	Granite Counters, High Ceilings
Appliances	Dishwasher, Dryer, Range Hood, Refrigerator, Stove(s), Washer, Window Coverings
Heating	Forced Air
Cooling	Central Air
Basement	None

### Exterior

Exterior Features	Other
Lot Description	Other
Roof	Asphalt Shingle
Construction	Brick, Vinyl Siding, Mixed
Foundation	Poured Concrete

### Additional Information

Date Listed	March 26th, 2025
Days on Market	29
Zoning	R-MD

### Listing Details

Listing Office	SOURCE 1 REALTY CORP.
----------------	-----------------------

Data is supplied by Pillar 9â„¢ MLSÂ® System. Pillar 9â„¢ is the owner of the copyright in its MLSÂ® System. Data is deemed reliable but is not guaranteed accurate by Pillar 9â„¢. The trademarks MLSÂ®, Multiple Listing ServiceÂ® and

the associated logos are owned by The Canadian Real Estate Association (CREA) and identify the quality of services provided by real estate professionals who are members of CREA. Used under license.