

\$395,000 - 1501, 650 10 Street Sw, Calgary

MLS® #A2203426

\$395,000

2 Bedroom, 2.00 Bathroom, 951 sqft
Residential on 0.00 Acres

Downtown West End, Calgary, Alberta

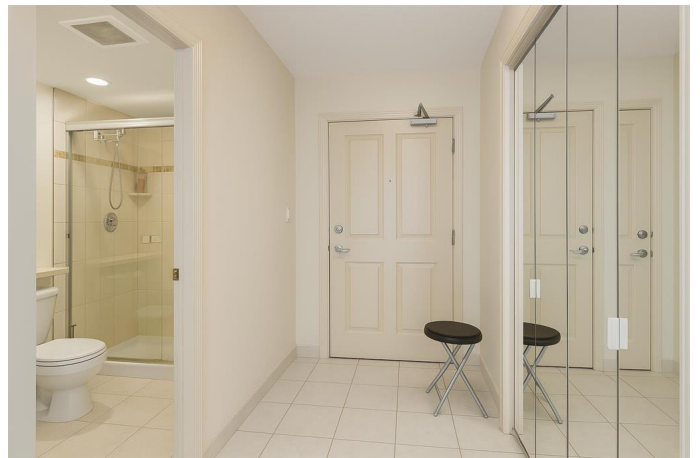
Your Dream Downtown Condo Awaits at
AXXIS!

Welcome to one of the most desirable and smartly designed corner units in the heart of West Downtown Calgary! This bright and spacious 2-bedroom, 2 full bathroom home in the prestigious AXXIS building offers the perfect blend of design, functionality, and location.

Enjoy the rare bonus of 2 Parking Stalls, Air Conditioning, and a large Storage Locker—everything you need for comfortable downtown living. Situated on the sun-drenched southwest corner, this unit is flooded with natural light thanks to stunning wrap-around floor-to-ceiling windows.

Step into a well-appointed kitchen with a central island, ideal for entertaining or prepping your favourite meals. The open-concept layout features a cozy gas fireplace, a dedicated dining area, in-suite laundry, and a large in-suite storage room for added convenience.

The AXXIS lifestyle doesn't stop at your door—residents enjoy a well-equipped gym, bike storage, a stylish *Owners' Lounge* perfect for hosting events (up to 90 guests!), a massive rooftop garden, and secure covered visitor parking. With on-site management and a strong sense of community, this building truly



stands out in its thoughtful design and utility.

Located just half a block from the LRT (in the free fare zone), and mere steps from the river pathways, restaurants, shops, and entertainment—*you*™ love the walkability and connectivity this location offers, to what matters most in Downtown Calgary.

Don't miss your chance to own this incredible downtown gem. Contact your favorite real estate agent today to book a private tour!

Built in 2000

Essential Information

MLS® #	A2203426
Price	\$395,000
Bedrooms	2
Bathrooms	2.00
Full Baths	2
Square Footage	951
Acres	0.00
Year Built	2000
Type	Residential
Sub-Type	Apartment
Style	Single Level Unit
Status	Active

Community Information

Address	1501, 650 10 Street Sw
Subdivision	Downtown West End
City	Calgary
County	Calgary
Province	Alberta
Postal Code	T2P 5G4

Amenities

Amenities	Elevator(s), Fitness Center, Parking, Trash, Visitor Parking, Other, Party
-----------	--

	Room
Parking Spaces	2
Parking	Assigned, Heated Garage, Parkade, Underground, Stall

Interior

Interior Features	No Animal Home, No Smoking Home, Open Floorplan, Vinyl Windows
Appliances	Central Air Conditioner, Dishwasher, Dryer, Electric Stove, Microwave Hood Fan, Refrigerator, Washer
Heating	Baseboard, Electric
Cooling	Central Air
Fireplace	Yes
# of Fireplaces	1
Fireplaces	Gas
# of Stories	25

Exterior

Exterior Features	Balcony
Construction	Brick, Concrete, Stucco

Additional Information

Date Listed	March 19th, 2025
Days on Market	35
Zoning	DC

Listing Details

Listing Office	RE/MAX Real Estate (Mountain View)
----------------	------------------------------------

Data is supplied by Pillar 9â„¢ MLSÂ® System. Pillar 9â„¢ is the owner of the copyright in its MLSÂ® System. Data is deemed reliable but is not guaranteed accurate by Pillar 9â„¢. The trademarks MLSÂ®, Multiple Listing ServiceÂ® and the associated logos are owned by The Canadian Real Estate Association (CREA) and identify the quality of services provided by real estate professionals who are members of CREA. Used under license.