

\$499,900 - 64148 Eastway Drive E, Rural Foothills County

MLS® #A2202158

\$499,900

0 Bedroom, 0.00 Bathroom,
Land on 11.54 Acres

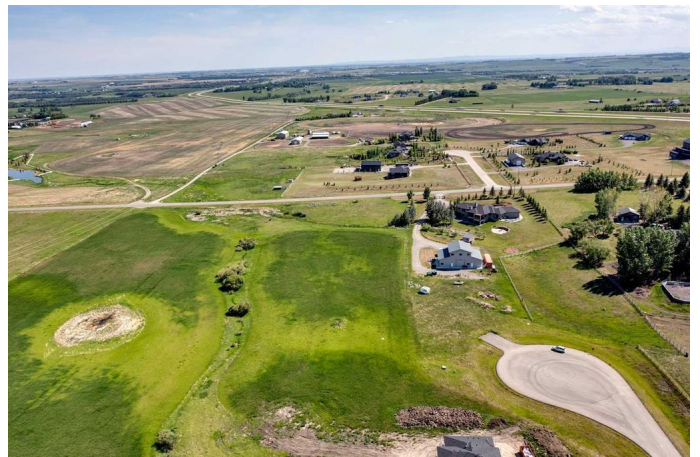
NONE, Rural Foothills County, Alberta

AMAZING location to build your "dream home" Welcome to this lovely paved cul-de-sac, only minutes to Okotoks and 15 minutes to Calgary. 11 acres with excellent views of the valley to the east and south for miles. Strong architectural controls to maintain the integrity of your neighbourhood, No building time commitment so you can buy and hold for the future dwhen you are ready to build. All services are to the property line and there is a fantastic well that produces 8 GPM. There is an additional approach to access the property from 338 on the SE corner of the property. 338 is scheduled to see a lot less traffic in the near future as the access from Highway 2 will be moving north and connecting to 80 street. Should be very quiet and rural soon, and just 8 minutes to Okotoks.

Essential Information

| | |
|-----------|------------------|
| MLS® # | A2202158 |
| Price | \$499,900 |
| Bathrooms | 0.00 |
| Acres | 11.54 |
| Type | Land |
| Sub-Type | Residential Land |
| Status | Active |

Community Information



| | |
|-------------|------------------------|
| Address | 64148 Eastway Drive E |
| Subdivision | NONE |
| City | Rural Foothills County |
| County | Foothills County |
| Province | Alberta |
| Postal Code | T1S 5V7 |

Additional Information

| | |
|----------------|------------------|
| Date Listed | March 14th, 2025 |
| Days on Market | 40 |
| Zoning | CRA |

Listing Details

| | |
|----------------|--------------------|
| Listing Office | Century 21 Masters |
|----------------|--------------------|

Data is supplied by Pillar 9â„¸ MLSÂ® System. Pillar 9â„¸ is the owner of the copyright in its MLSÂ® System. Data is deemed reliable but is not guaranteed accurate by Pillar 9â„¸. The trademarks MLSÂ®, Multiple Listing ServiceÂ® and the associated logos are owned by The Canadian Real Estate Association (CREA) and identify the quality of services provided by real estate professionals who are members of CREA. Used under license.