

\$699,999 - 52 Edith Mews Nw, Calgary

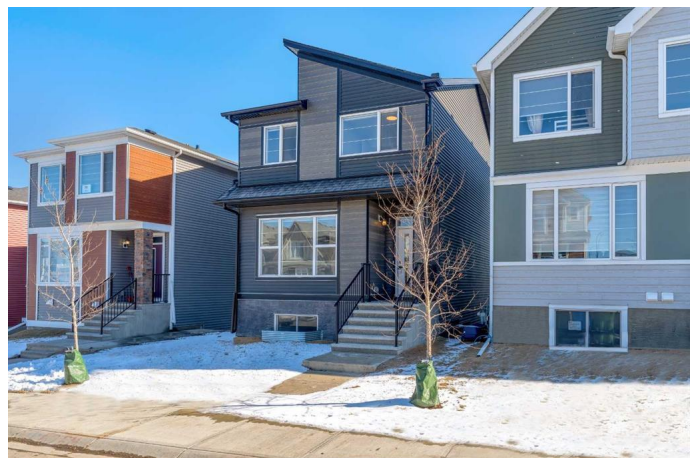
MLS® #A2200108

\$699,999

3 Bedroom, 3.00 Bathroom, 1,835 sqft
Residential on 0.06 Acres

Glacier Ridge, Calgary, Alberta

Welcome to this Stunning 1800+ Sq.ft home, with WALK OUT BASEMENT, LARGE DECK , Fully Upgraded WITH EXTRA WINDOWS perfectly designed for modern living located in the highly desirable new community of Glacier Ridge. You will be impressed by this unique detached home built by Trico Homes comes with 3 bedrooms, 2.5 bathrooms, and an open-concept layout with a bright and spacious living area. The gourmet kitchen features stainless steel appliances, quartz countertops, a large island and ample cabinetry with a modern elegant touch. There is a dedicated Dining area across the kitchen which offers easy access for serving meals to your family while maintaining an open and connected atmosphere. The open layout with ample natural light and a cozy ambiance, it serves as the perfect space for creating a wonderful and lively conversations. The upper floor of the home is thoughtfully designed for comfort and convenience, featuring three spacious bedrooms, two baths including a luxurious master suite. The master bedroom serves as a private retreat, complete with a generous walk-in closet and an elegant en-suite bathroom, offering a perfect blend of relaxation and functionality. A versatile bonus room adds extra flexibility to the floor plan—ideal for a family lounge, playroom, home office, or entertainment space. The laundry room is strategically located on this level, making household chores effortless and easily accessible.



The location offers exceptional convenience, with quick access to major roads like Stoney Trail, Sarcee Trail, and Shaganappi Trail. Just a short 7-minute drive brings you to a variety of amenities, including Walmart, Costco, Dollar Store, Bottle Depot, major banks, T&T Supermarket, clinics, and an array of restaurants. While Calgary International Airport and CrossIron Mills are just a short drive away. Additionally, nearby green spaces, GLACIER RIDGE PLAYGROUND provide opportunities for outdoor recreation and relaxation. House is located on QUIET, LOW TRAFFIC STREET perfect for those seeking tranquility and Comfort. Take advantage of your opportunity to see this incredible property in person—book your showing today!

Built in 2023

Essential Information

MLS® #	A2200108
Price	\$699,999
Bedrooms	3
Bathrooms	3.00
Full Baths	2
Half Baths	1
Square Footage	1,835
Acres	0.06
Year Built	2023
Type	Residential
Sub-Type	Detached
Style	2 Storey
Status	Active

Community Information

Address	52 Edith Mews Nw
Subdivision	Glacier Ridge
City	Calgary
County	Calgary

Province Alberta
Postal Code T3R1Y8

Amenities

Amenities Other
Parking Spaces 2
Parking Off Street, Parking Pad

Interior

Interior Features Kitchen Island, No Animal Home, No Smoking Home, Open Floorplan, Quartz Counters
Appliances Dishwasher, Microwave, Range Hood, Refrigerator, Washer/Dryer, Built-In Gas Range
Heating Forced Air
Cooling None
Has Basement Yes
Basement None, Walk-Out

Exterior

Exterior Features Other
Lot Description Back Lane
Roof Asphalt Shingle
Construction Other, Vinyl Siding
Foundation Poured Concrete

Additional Information

Date Listed March 7th, 2025
Days on Market 46
Zoning R-G
HOA Fees Freq. ANN

Listing Details

Listing Office Coldwell Banker YAD Realty

Data is supplied by Pillar 9â„¢ MLSÂ® System. Pillar 9â„¢ is the owner of the copyright in its MLSÂ® System. Data is deemed reliable but is not guaranteed accurate by Pillar 9â„¢. The trademarks MLSÂ®, Multiple Listing ServiceÂ® and the associated logos are owned by The Canadian Real Estate Association (CREA) and identify the quality of services provided by real estate professionals who are members of CREA. Used under license.