

# \$460,000 - 1163 Penrith Crescent Se, Calgary

MLS® #A2199924

## \$460,000

6 Bedroom, 2.00 Bathroom, 889 sqft  
Residential on 0.09 Acres

Penbrooke Meadows, Calgary, Alberta

Don't miss out on this beautiful bungalow! Whether you're looking for a starter home or a fixer-upper, this property has great potential. Conveniently located near schools, shopping, and public transit, with easy access to Memorial Drive and 17th Ave. The home features 3 bedrooms on the main floor and 1 full Bath. The basement has a illegal suite consists of 2 bedroom and a 1 full bath downstairs and a separate entrance. Live up and rent down!

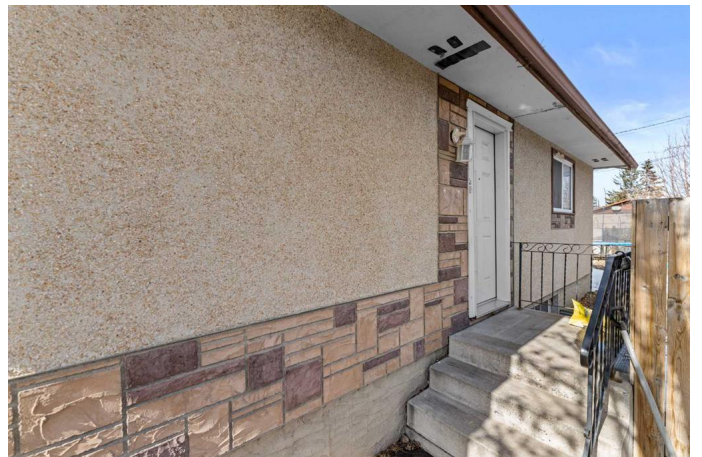
Built in 1971

## Essential Information

MLS® #	A2199924
Price	\$460,000
Bedrooms	6
Bathrooms	2.00
Full Baths	2
Square Footage	889
Acres	0.09
Year Built	1971
Type	Residential
Sub-Type	Detached
Style	Bungalow
Status	Active

## Community Information

Address	1163 Penrith Crescent Se
Subdivision	Penbrooke Meadows



City	Calgary
County	Calgary
Province	Alberta
Postal Code	T2A 2H8

### **Amenities**

Parking Spaces	4
Parking	Parking Pad

### **Interior**

Interior Features	No Smoking Home
Appliances	Dryer, Range Hood, Refrigerator, Stove(s), Washer, Window Coverings
Heating	Forced Air
Cooling	Central Air
Has Basement	Yes
Basement	Finished, Full

### **Exterior**

Exterior Features	Garden, Other
Lot Description	Garden
Roof	Asphalt Shingle
Construction	Stucco, Wood Frame, Wood Siding
Foundation	Poured Concrete

### **Additional Information**

Date Listed	March 13th, 2025
Days on Market	41
Zoning	R-CG

### **Listing Details**

Listing Office	RE/MAX Real Estate (Central)
----------------	------------------------------

Data is supplied by Pillar 9â„¢ MLSÂ® System. Pillar 9â„¢ is the owner of the copyright in its MLSÂ® System. Data is deemed reliable but is not guaranteed accurate by Pillar 9â„¢. The trademarks MLSÂ®, Multiple Listing ServiceÂ® and the associated logos are owned by The Canadian Real Estate Association (CREA) and identify the quality of services provided by real estate professionals who are members of CREA. Used under license.