

\$69,900 - #5, 660022 - Range Road 225.5 (unit 51), Athabasca

MLS® #A2199913

\$69,900

0 Bedroom, 0.00 Bathroom,
Land on 0.46 Acres

NONE, Athabasca, Alberta

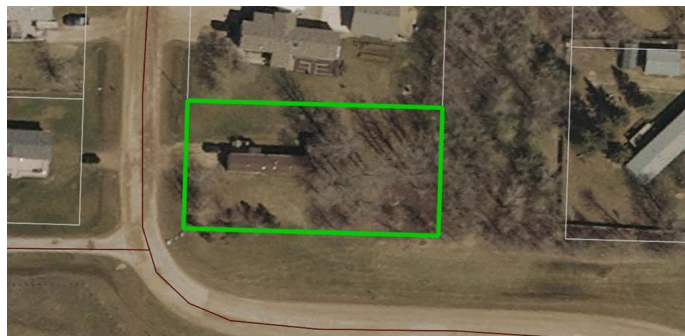
End corner unit at Westwind, available and ready for you to make it your own. This 0.464 acre lot is site ready . Power, gas, water and septic lines are all on the lot, so no new trenching will be required for a home placement. Mobile home that is currently on the lot will be moved off prior to closing and is not included in the sale. Westwind is a community south of Athabasca, AB that provides residents with a convenient and comfortable living environment. Amenities at Westwind include common areas, playgrounds, and convenient parking options. The community strives to create a welcoming and inclusive atmosphere for all individuals seeking a place to call home.

Essential Information

| | |
|-----------|------------------|
| MLS® # | A2199913 |
| Price | \$69,900 |
| Bathrooms | 0.00 |
| Acres | 0.46 |
| Type | Land |
| Sub-Type | Residential Land |
| Status | Active |

Community Information

| | |
|-------------|---|
| Address | #5, 660022 - Range Road 225.5 (unit 51) |
| Subdivision | NONE |



| | |
|-------------|------------------|
| City | Athabasca |
| County | Athabasca County |
| Province | Alberta |
| Postal Code | T9S 1C4 |

Amenities

| | |
|-----------|------|
| Amenities | Park |
|-----------|------|

Additional Information

| | |
|----------------|-----------------|
| Date Listed | March 6th, 2025 |
| Days on Market | 47 |
| Zoning | A |

Listing Details

| | |
|----------------|----------------------------|
| Listing Office | ROYAL LEPAGE COUNTY REALTY |
|----------------|----------------------------|

Data is supplied by Pillar 9â„¢ MLS® System. Pillar 9â„¢ is the owner of the copyright in its MLS® System. Data is deemed reliable but is not guaranteed accurate by Pillar 9â„¢. The trademarks MLS®, Multiple Listing Service® and the associated logos are owned by The Canadian Real Estate Association (CREA) and identify the quality of services provided by real estate professionals who are members of CREA. Used under license.