

\$880,000 - 614, 67325 Churchill Park Road, Lac La Biche

MLS® #A2198448

\$880,000

4 Bedroom, 4.00 Bathroom, 2,099 sqft
Residential on 0.67 Acres

Lac La Biche, Lac La Biche, Alberta

Discover this stunning 4-bedroom + den, 3.5-bathroom lakefront home in the desirable Lakeview Estates subdivision. Featuring over 4000sqft of living space and nestled on a private, treed lot, this beautifully renovated home offers breathtaking views of the islands on Lac La Biche and provides the perfect blend of seclusion and convenience. Within the past 10 years this home has received many updates such as a new roof, windows, flooring, paint, appliances, dual zone forced air furnace and AC with steam humidifier! Your double attached garage allows for plenty of storage and parking.

Enjoy direct access to nature, with walking trails connecting you to town, Lac La Biche golf course, and Sir Winston Churchill Provincial Park—all just a short walk away! Designed with families in mind, this move-in-ready home features spacious living areas, modern updates, and a warm, inviting atmosphere. Enjoy the views of your private yard from one of 2 patio spaces, hot tub, or walk down to the lake in your personal paths. If you're looking for a peaceful retreat with all the amenities close at hand, this is the one for you!

Call today for your personal viewing!

Built in 1988

Essential Information



MLS® #	A2198448
Price	\$880,000
Bedrooms	4
Bathrooms	4.00
Full Baths	3
Half Baths	1
Square Footage	2,099
Acres	0.67
Year Built	1988
Type	Residential
Sub-Type	Detached
Style	Acreage with Residence, Bungalow
Status	Active

Community Information

Address	614, 67325 Churchill Park Road
Subdivision	Lac La Biche
City	Lac La Biche
County	Lac La Biche County
Province	Alberta
Postal Code	T0A2C1

Amenities

Parking	Double Garage Attached
# of Garages	2
Is Waterfront	Yes
Waterfront	Lake

Interior

Interior Features	Ceiling Fan(s), French Door, Granite Counters, High Ceilings, Open Floorplan
Appliances	Built-In Oven, Central Air Conditioner, Dishwasher, Dryer, Humidifier, Refrigerator, Washer, Built-In Gas Range
Heating	Boiler, Fireplace(s), Forced Air
Cooling	Central Air
Fireplace	Yes
# of Fireplaces	2
Fireplaces	Gas
Has Basement	Yes

Basement Finished, Full, Walk-Out

Exterior

Exterior Features Private Yard

Lot Description Cul-De-Sac, Landscaped, Wa

Roof Asphalt

Construction Mixed

Foundation Poured Concrete

Additional Information

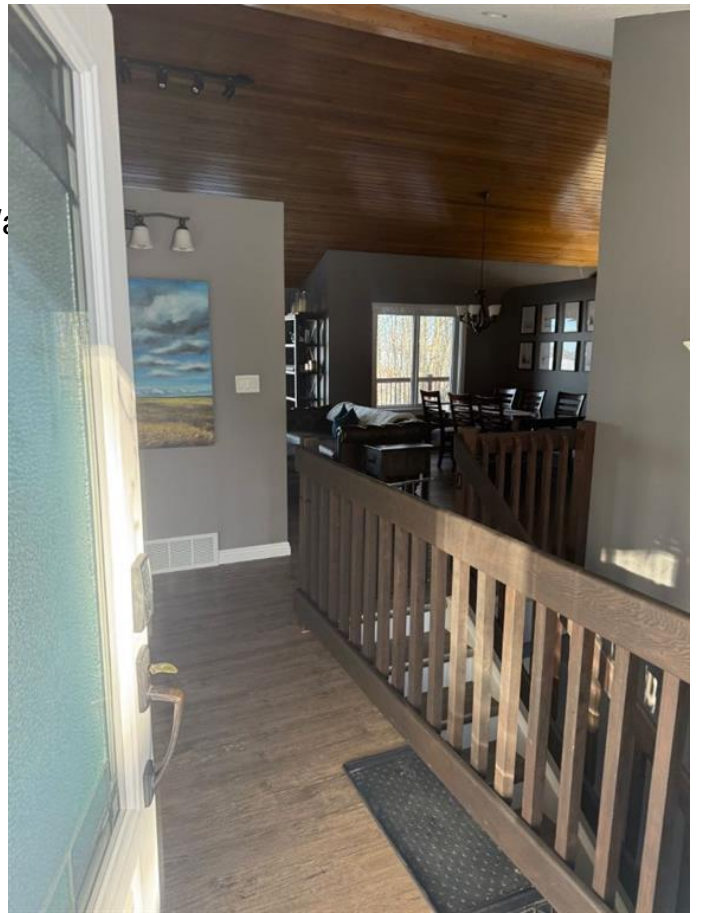
Date Listed March 6th, 2025

Days on Market 47

Zoning T0A2C1

Listing Details

Listing Office RE/MAX LA BICHE REALTY



Data is supplied by Pillar 9â,,ç MLSÂ® System. Pillar 9â,,ç is the owner of the copyright in its MLSÂ® System. Data is deemed reliable but is not guaranteed accurate by Pillar 9â,,ç. The trademarks MLSÂ®, Multiple Listing ServiceÂ® and the associated logos are owned by The Canadian Real Estate Association (CREA) and identify the quality of services provided by real estate professionals who are members of CREA. Used under license.