

\$329,000 - 101 Prairie Arbour Boulevard S, Lethbridge

MLS® #A2190268

\$329,000

0 Bedroom, 0.00 Bathroom,
Land on 0.41 Acres

Arbour Ridge, Lethbridge, Alberta

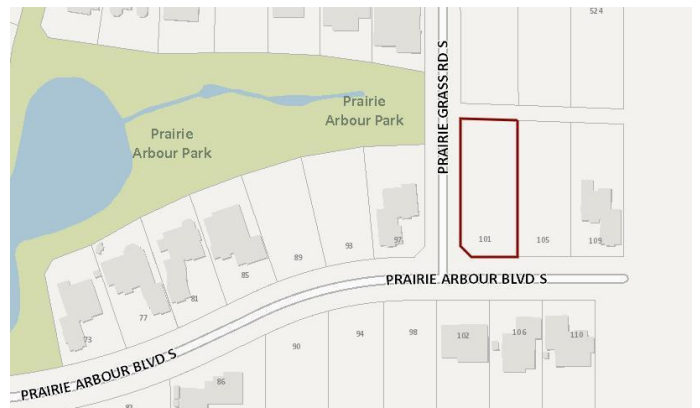
Welcome to Prairie Arbour Estates! This community is the premier destination for estate living in south Lethbridge and serves as the benchmark for upscale developments in southern Alberta. Prairie Arbour Estates boasts unrivaled views of Sixmile Coulee and easy access to walking trails and the spectacular Prairie Arbour Park. This 0.41 acre lot sits on a quiet corner with a rear pathway and quick access across the street to the community park and playground. Comparative market value for a lot of this size and location makes this property a tremendously valuable investment.

Essential Information

MLS® #	A2190268
Price	\$329,000
Bathrooms	0.00
Acres	0.41
Type	Land
Sub-Type	Residential Land
Status	Active

Community Information

Address	101 Prairie Arbour Boulevard S
Subdivision	Arbour Ridge
City	Lethbridge
County	Lethbridge
Province	Alberta



Postal Code T1K 5W3

Exterior

Lot Description Level, Near Shopping Center, Street Lighting, Corner Lot

Additional Information

Date Listed January 26th, 2025

Days on Market 85

Zoning DC

Listing Details

Listing Office REAL BROKER

Data is supplied by Pillar 9â„¸ MLSÂ® System. Pillar 9â„¸ is the owner of the copyright in its MLSÂ® System. Data is deemed reliable but is not guaranteed accurate by Pillar 9â„¸. The trademarks MLSÂ®, Multiple Listing ServiceÂ® and the associated logos are owned by The Canadian Real Estate Association (CREA) and identify the quality of services provided by real estate professionals who are members of CREA. Used under license.