

\$269,900 - 2330 Waskway Drive, Wabasca

MLS® #A2185362

\$269,900

4 Bedroom, 2.00 Bathroom, 1,504 sqft

Residential on 1.12 Acres

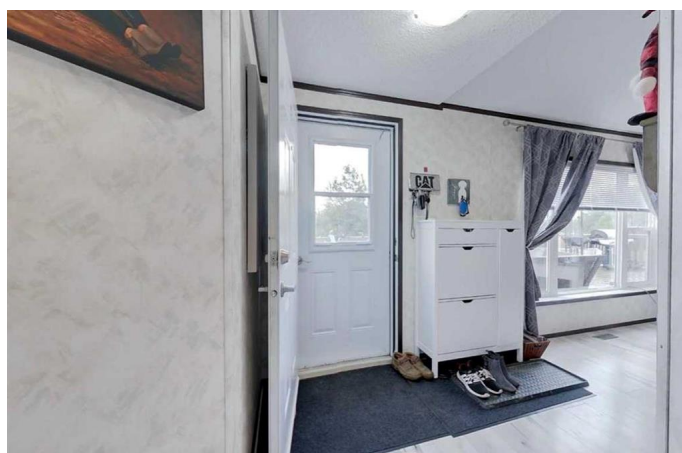
NONE, Wabasca, Alberta

Discover an exceptional chance to acquire a stunning 4 bedroom modular residence situated on an impressive 1.12-acre plot, offering numerous appealing amenities. This remarkable property is destined to catch your eye and transform into your ideal living space! The residence features a private primary bedroom, enhanced by a walk-in wardrobe and a 3 pc ensuite bathroom. The opposite wing houses three well-proportioned bedrooms, sharing a convenient 4 pc bathroom situated directly across. These spaces provide adaptability and relaxation for family or visitors. The inviting kitchen comes equipped with contemporary appliances, plentiful cabinet space, and a practical center island. Positioned on an expansive 1.12-acre lot, this property delivers extensive room for outdoor pursuits, maintaining a garden, or potential future additions to suit your vision.

Built in 2010

Essential Information

MLS® #	A2185362
Price	\$269,900
Bedrooms	4
Bathrooms	2.00
Full Baths	2
Square Footage	1,504
Acres	1.12
Year Built	2010



Type	Residential
Sub-Type	Detached
Style	Acreage with Residence, Modular Home
Status	Active

Community Information

Address	2330 Waskway Drive
Subdivision	NONE
City	Wabasca
County	Opportunity No. 17, M.D. of
Province	Alberta
Postal Code	T0G 2K0

Amenities

Parking	Driveway, Parking Pad
---------	-----------------------

Interior

Interior Features	Ceiling Fan(s), High Ceilings, Storage
Appliances	Dishwasher, Oven-Built-In, Refrigerator, Washer/Dryer, Window Coverings, Oven
Heating	Forced Air, Natural Gas
Cooling	None
Basement	None

Exterior

Exterior Features	None
Lot Description	Back Yard, Many Trees, Rectangular Lot, Brush
Roof	Asphalt Shingle
Construction	Vinyl Siding, Wood Frame
Foundation	Piling(s)

Additional Information

Date Listed	January 3rd, 2025
Days on Market	108
Zoning	R1A

Listing Details

Listing Office	ROYAL LEPAGE PROGRESSIVE REALTY
----------------	---------------------------------

Data is supplied by Pillar 9â„¢ MLS® System. Pillar 9â„¢ is the owner of the copyright in its MLS® System. Data is deemed reliable but is not guaranteed accurate by Pillar 9â„¢. The trademarks MLS®, Multiple Listing Service® and

the associated logos are owned by The Canadian Real Estate Association (CREA) and identify the quality of services provided by real estate professionals who are members of CREA. Used under license.