

\$1,511,500 - 2 River Heights Drive Sw, Cochrane

MLS® #A2181514

\$1,511,500

0 Bedroom, 0.00 Bathroom,
Land on 6.04 Acres

Southbow Landing, Cochrane, Alberta

100 foot wide x 2833 feet long piece of land being sub divided on the west edge of the subdivision adjacent to HIGHWAY 22 in the new SOUTHBOW LANDING Subdivision being developed on the southern edge of Cochrane. Great visibility from the highway. Possible land for widening of Highway 22. Sale of this land is conditional on subdivision approval and sale of the remainder of the land being sold to an unrelated party prior to closing.



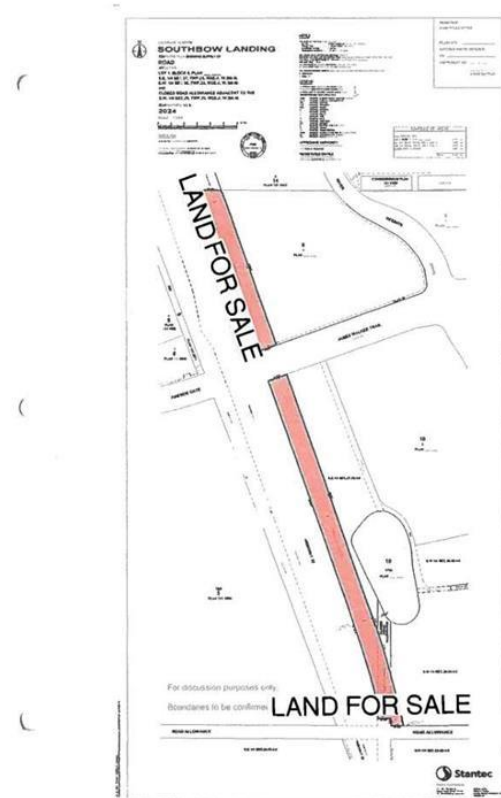
Essential Information

| | |
|-----------|-----------------|
| MLS® # | A2181514 |
| Price | \$1,511,500 |
| Bathrooms | 0.00 |
| Acres | 6.04 |
| Type | Land |
| Sub-Type | Commercial Land |
| Status | Active |

Community Information

| | |
|-------------|--------------------------|
| Address | 2 River Heights Drive Sw |
| Subdivision | Southbow Landing |
| City | Cochrane |
| County | Rocky View County |
| Province | Alberta |
| Postal Code | T4C0N8 |

Additional Information



| | |
|----------------|---------------------|
| Date Listed | November 26th, 2024 |
| Days on Market | 145 |
| Zoning | I-G |

Listing Details

| | |
|----------------|---------------------------|
| Listing Office | RE/MAX Landan Real Estate |
|----------------|---------------------------|

Data is supplied by Pillar 9â„¢ MLSÂ® System. Pillar 9â„¢ is the owner of the copyright in its MLSÂ® System. Data is deemed reliable but is not guaranteed accurate by Pillar 9â„¢. The trademarks MLSÂ®, Multiple Listing ServiceÂ® and the associated logos are owned by The Canadian Real Estate Association (CREA) and identify the quality of services provided by real estate professionals who are members of CREA. Used under license.