

# \$787,395 - 2 Range Road 83b, Rural Bighorn No. 8, M.D. of

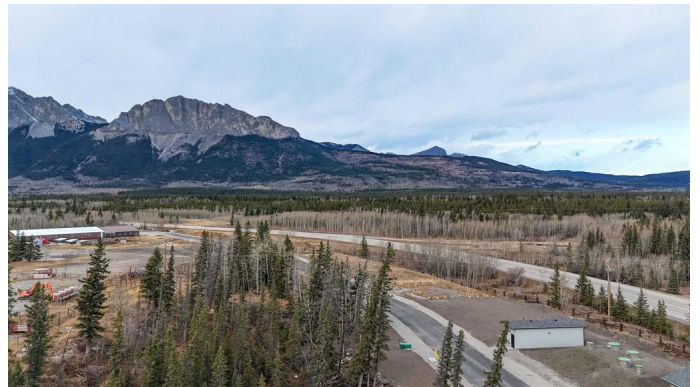
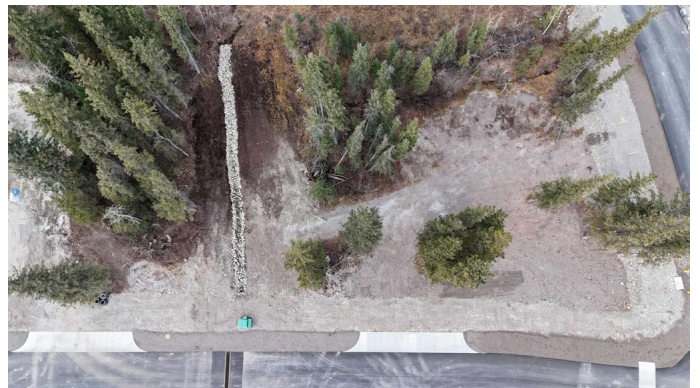
MLS® #A2180948

**\$787,395**

0 Bedroom, 0.00 Bathroom,  
Land on 0.21 Acres

Kananaskis, Rural Bighorn No. 8, M.D. of,  
Alberta

Nestled along the Bow River, Brewster's™ Kananaskis Ranch offers a rare opportunity to own in an exclusive mountain community. Only five spacious lots remain, where buyers can collaborate with their own builders and designers under architectural guidelines that ensure cohesive yet personalized homes. This historic development blends modern luxury with the natural beauty of Alberta, offering unparalleled access to outdoor activities like hiking, skiing, fishing, and golfing. With stunning surroundings and strong investment potential, this is your chance to own a slice of Alberta's™ history and enjoy a serene mountain lifestyle like no other.



## Essential Information

MLS® #	A2180948
Price	\$787,395
Bathrooms	0.00
Acres	0.21
Type	Land
Sub-Type	Residential Land
Status	Active

## Community Information

Address	2 Range Road 83b
Subdivision	Kananaskis

City	Rural Bighorn No. 8, M.D. of
County	Bighorn No. 8, M.D. of
Province	Alberta
Postal Code	T0L 2C1

### **Amenities**

Amenities	None
-----------	------

### **Exterior**

Lot Description	Sloped Up
-----------------	-----------

### **Additional Information**

Date Listed	November 25th, 2024
-------------	---------------------

Days on Market	109
----------------	-----

Zoning	Resort
--------	--------

### **Listing Details**

Listing Office	Grassroots Realty Group
----------------	-------------------------

Data is supplied by Pillar 9â„¢ MLSÂ® System. Pillar 9â„¢ is the owner of the copyright in its MLSÂ® System. Data is deemed reliable but is not guaranteed accurate by Pillar 9â„¢. The trademarks MLSÂ®, Multiple Listing ServiceÂ® and the associated logos are owned by The Canadian Real Estate Association (CREA) and identify the quality of services provided by real estate professionals who are members of CREA. Used under license.