

\$67,900 - C8, 9523 88 Avenue, Peace River

MLS® #A2179735

\$67,900

1 Bedroom, 1.00 Bathroom, 544 sqft

Residential on 0.00 Acres

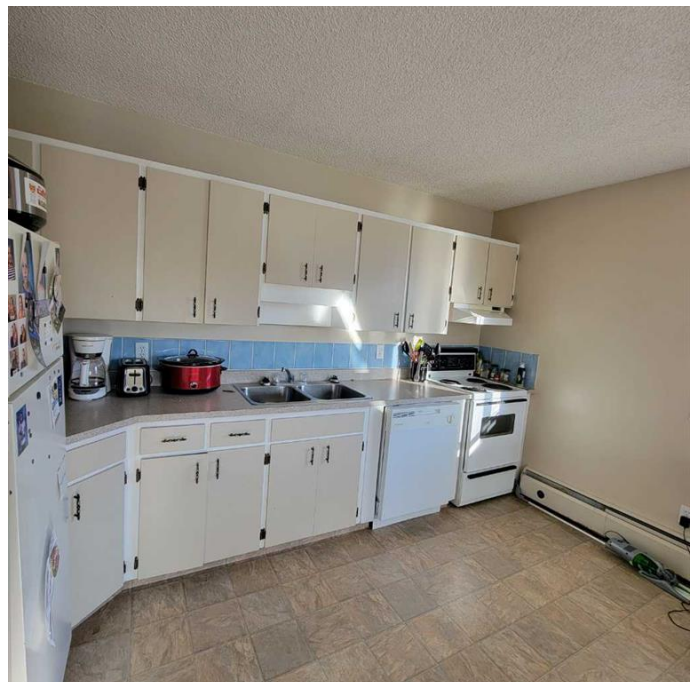
North End., Peace River, Alberta

Parkview Court - This one bedroom, one bathroom condo is located on the North End of town close to the river. Close to schools, walking and biking paths, park, playground, Baytex Centre and swimming pool. These units are pet friendly, with restrictions. There is assigned parking. The condo fees are reasonable and include many amenities. It is an affordable alternative when purchasing a home for yourself or as an easy-to-rent investment property. This condo unit has a sitting tenant in place who is willing to carry on a lease. This unit is on the top floor. If you are looking for a stress free lifestyle with low condo fees...this may be just what you are looking for!

Built in 1963

Essential Information

MLS® #	A2179735
Price	\$67,900
Bedrooms	1
Bathrooms	1.00
Full Baths	1
Square Footage	544
Acres	0.00
Year Built	1963
Type	Residential
Sub-Type	Apartment
Style	Low-Rise(1-4)



Status Active

Community Information

Address C8, 9523 88 Avenue
Subdivision North End.
City Peace River
County Peace No. 135, M.D. of
Province Alberta
Postal Code T8S1G6

Amenities

Amenities Park, Parking, Playground, Snow Removal, Trash, Pool
Parking Spaces 1
Parking Parking Pad

Interior

Interior Features Kitchen Island, Open Floorplan, Separate Entrance, Vinyl Windows, Laminate Counters
Appliances Electric Stove, Refrigerator, Washer/Dryer Stacked
Heating Baseboard
Cooling None
of Stories 2

Exterior

Exterior Features Private Entrance, Storage
Roof Asphalt
Construction Mixed
Foundation Poured Concrete

Additional Information

Date Listed November 17th, 2024
Days on Market 157
Zoning R-medium density

Listing Details

Listing Office Royal LePage Valley Realty

Data is supplied by Pillar 9â„¢ MLSÂ® System. Pillar 9â„¢ is the owner of the copyright in its MLSÂ® System. Data is deemed reliable but is not guaranteed accurate by Pillar 9â„¢. The trademarks MLSÂ®, Multiple Listing ServiceÂ® and the associated logos are owned by The Canadian Real Estate Association (CREA) and identify the quality of services provided by real estate professionals who are members of CREA. Used under license.