

# \$115,000 - On #2/35 Highway, Rural Peace No. 135, M.D. of

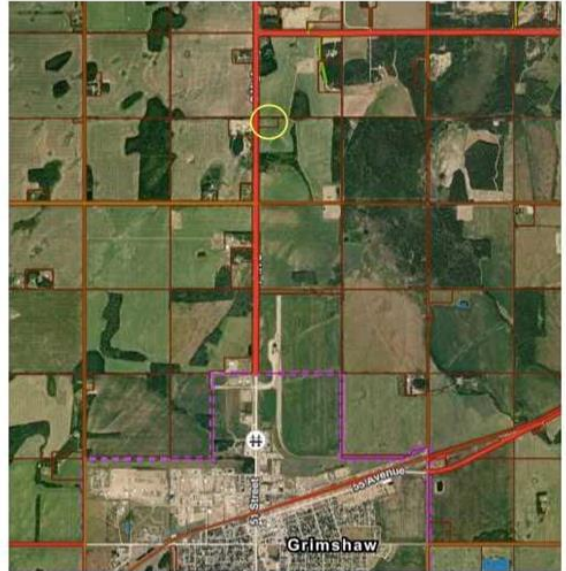
MLS® #A2177889

**\$115,000**

0 Bedroom, 0.00 Bathroom,  
Land on 4.15 Acres

NONE, Rural Peace No. 135, M.D. of, Alberta

Great opportunity to build your dream home!  
Minutes from Grimshaw with highway frontage  
so no gravel to travel. This acreage has an  
existing water well but is otherwise a blank  
slate so you will have minimal work to  
complete prior to building or bringing a home  
in. Site is not treed so you can plant them  
wherever you like! Power and gas lines are  
close by so easy to bring onto the property.



## Essential Information

MLS® #	A2177889
Price	\$115,000
Bathrooms	0.00
Acres	4.15
Type	Land
Sub-Type	Residential Land
Status	Active

## Community Information

Address	On #2/35 Highway
Subdivision	NONE
City	Rural Peace No. 135, M.D. of
County	Peace No. 135, M.D. of
Province	Alberta
Postal Code	T0H 1W0



## Additional Information

Date Listed	November 6th, 2024
Days on Market	168
Zoning	CR - Country Residential

### **Listing Details**

Listing Office	RE/MAX Northern Realty
----------------	------------------------

Data is supplied by Pillar 9â,,ç MLSÂ® System. Pillar 9â,,ç is the owner of the copyright in its MLSÂ® System. Data is deemed reliable but is not guaranteed accurate by Pillar 9â,,ç. The trademarks MLSÂ®, Multiple Listing ServiceÂ® and the associated logos are owned by The Canadian Real Estate Association (CREA) and identify the quality of services provided by real estate professionals who are members of CREA. Used under license.