

\$55,000 - 13410 91 Street, Peace River

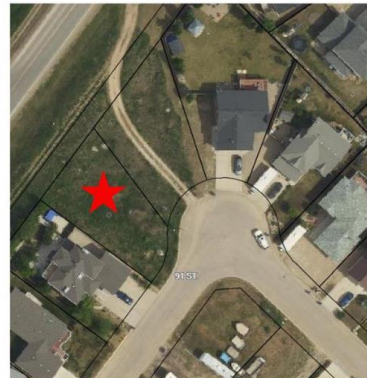
MLS® #A2166810

\$55,000

0 Bedroom, 0.00 Bathroom,
Land on 0.17 Acres

Shaftesbury Estates, Peace River, Alberta

Great opportunity to build your home in Shaftesbury Estates! Only a short walk to the nearby playground you will find this to be an ideal neighborhood your family! The lot next door is also for sale so if you are wanting to build a home with a larger footprint this could be a great fit!



Essential Information

| | |
|-----------|------------------|
| MLS® # | A2166810 |
| Price | \$55,000 |
| Bathrooms | 0.00 |
| Acres | 0.17 |
| Type | Land |
| Sub-Type | Residential Land |
| Status | Active |



Community Information

| | |
|-------------|------------------------|
| Address | 13410 91 Street |
| Subdivision | Shaftesbury Estates |
| City | Peace River |
| County | Peace No. 135, M.D. of |
| Province | Alberta |
| Postal Code | T8S 1X3 |

Additional Information

| | |
|----------------|----------------------|
| Date Listed | September 18th, 2024 |
| Days on Market | 216 |
| Zoning | R1-A |

Listing Details

Listing Office RE/MAX Northern Realty

Data is supplied by Pillar 9â,,ç MLSÂ® System. Pillar 9â,,ç is the owner of the copyright in its MLSÂ® System. Data is deemed reliable but is not guaranteed accurate by Pillar 9â,,ç. The trademarks MLSÂ®, Multiple Listing ServiceÂ® and the associated logos are owned by The Canadian Real Estate Association (CREA) and identify the quality of services provided by real estate professionals who are members of CREA. Used under license.