

\$45,000 - 1 Riddle Place, Out of Province_Alberta

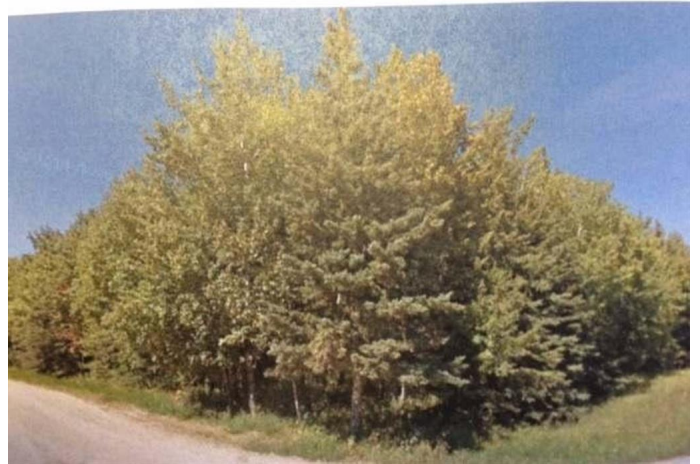
MLS® #A2146915

\$45,000

0 Bedroom, 0.00 Bathroom,
Land on 0.59 Acres

NONE, Out of Province_Alberta,
Saskatchewan

Big River, Natures' Doorstep! Looking for land in the heart of lake country? The shores of Cowan Lake and great fishing are just steps away! This .59 acre lot in the MD of Big River, is a well treed corner lot and is just waiting for you to make it your own. Services are just across the street. The neighboring .53 acre lot (Lot 2, Riddle Place) located directly the the west is also available.



Essential Information

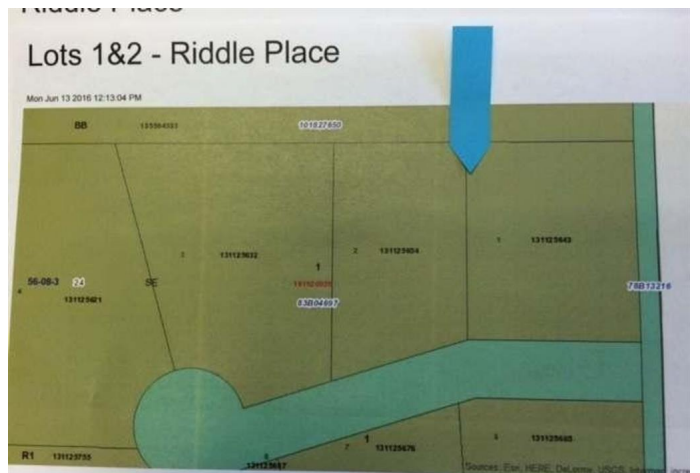
| | |
|-----------|------------------|
| MLS® # | A2146915 |
| Price | \$45,000 |
| Bathrooms | 0.00 |
| Acres | 0.59 |
| Type | Land |
| Sub-Type | Residential Land |
| Status | Active |

Community Information

| | |
|-------------|-------------------------|
| Address | 1 Riddle Place |
| Subdivision | NONE |
| City | Out of Province_Alberta |
| County | Out Of Board |
| Province | Saskatchewan |
| Postal Code | S0J 0E0 |

Amenities

| | |
|-----------|------|
| Utilities | None |
|-----------|------|



Exterior

Lot Description Corner Lot, Rectangular Lot, Wooded

Additional Information

Date Listed July 4th, 2024
Days on Market 292
Zoning RES

Listing Details

Listing Office COLDWELL BANKER - CITY SIDE REALTY

Data is supplied by Pillar 9â„¢ MLS® System. Pillar 9â„¢ is the owner of the copyright in its MLS® System. Data is deemed reliable but is not guaranteed accurate by Pillar 9â„¢. The trademarks MLS®, Multiple Listing Service® and the associated logos are owned by The Canadian Real Estate Association (CREA) and identify the quality of services provided by real estate professionals who are members of CREA. Used under license.