

\$195,000 - 190000 Township Road 685, Rural Athabasca County

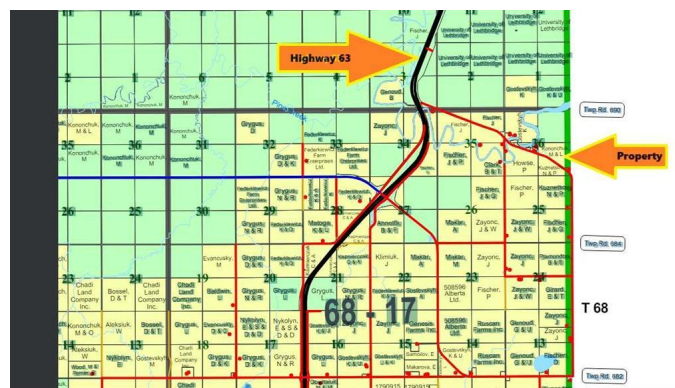
MLS® #A2127612

\$195,000

0 Bedroom, 0.00 Bathroom,
Land on 90.69 Acres

NONE, Rural Athabasca County, Alberta

Living the dream will get you to this property. 90 acres of perfect rec land. Well balanced with open meadow and timber. Access to the Lac La Biche River will give you miles of river fun. Crown land to the north gives you extra room to play. A mazing location between Lac La Biche and Highway 63. Buy it for your dreams, or with campground development potential.



Essential Information

| | |
|-----------|------------------|
| MLS® # | A2127612 |
| Price | \$195,000 |
| Bathrooms | 0.00 |
| Acres | 90.69 |
| Type | Land |
| Sub-Type | Residential Land |
| Status | Active |

Community Information

| | |
|-------------|--------------------------|
| Address | 190000 Township Road 685 |
| Subdivision | NONE |
| City | Rural Athabasca County |
| County | Athabasca County |
| Province | Alberta |
| Postal Code | T0A1V0 |

Additional Information

| | |
|----------------|------------------|
| Date Listed | April 30th, 2024 |
| Days on Market | 357 |
| Zoning | Ag |

Listing Details

| | |
|----------------|----------------------------|
| Listing Office | ROYAL LEPAGE COUNTY REALTY |
|----------------|----------------------------|

Data is supplied by Pillar 9â„¢ MLS® System. Pillar 9â„¢ is the owner of the copyright in its MLS® System. Data is deemed reliable but is not guaranteed accurate by Pillar 9â„¢. The trademarks MLS®, Multiple Listing Service® and the associated logos are owned by The Canadian Real Estate Association (CREA) and identify the quality of services provided by real estate professionals who are members of CREA. Used under license.